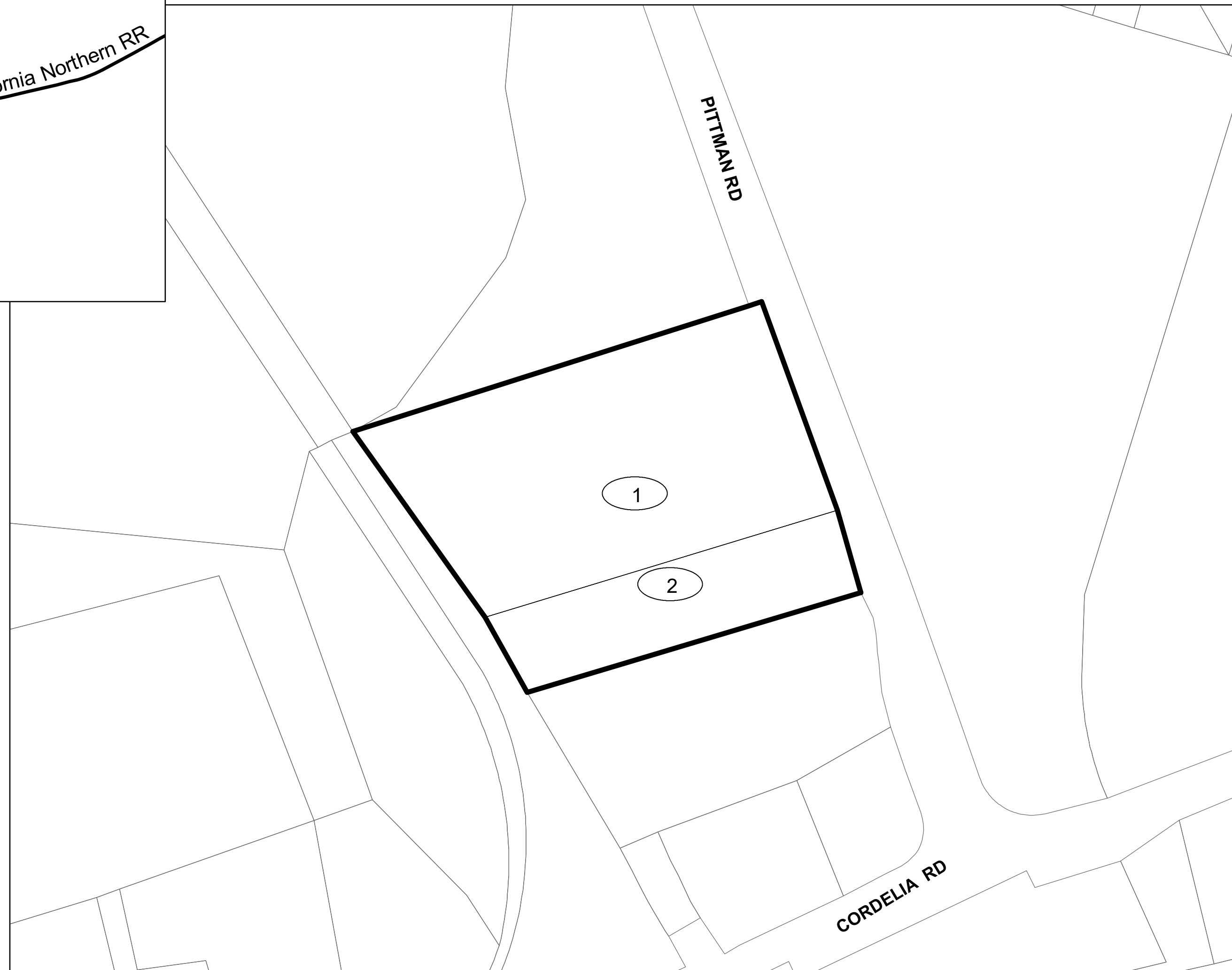
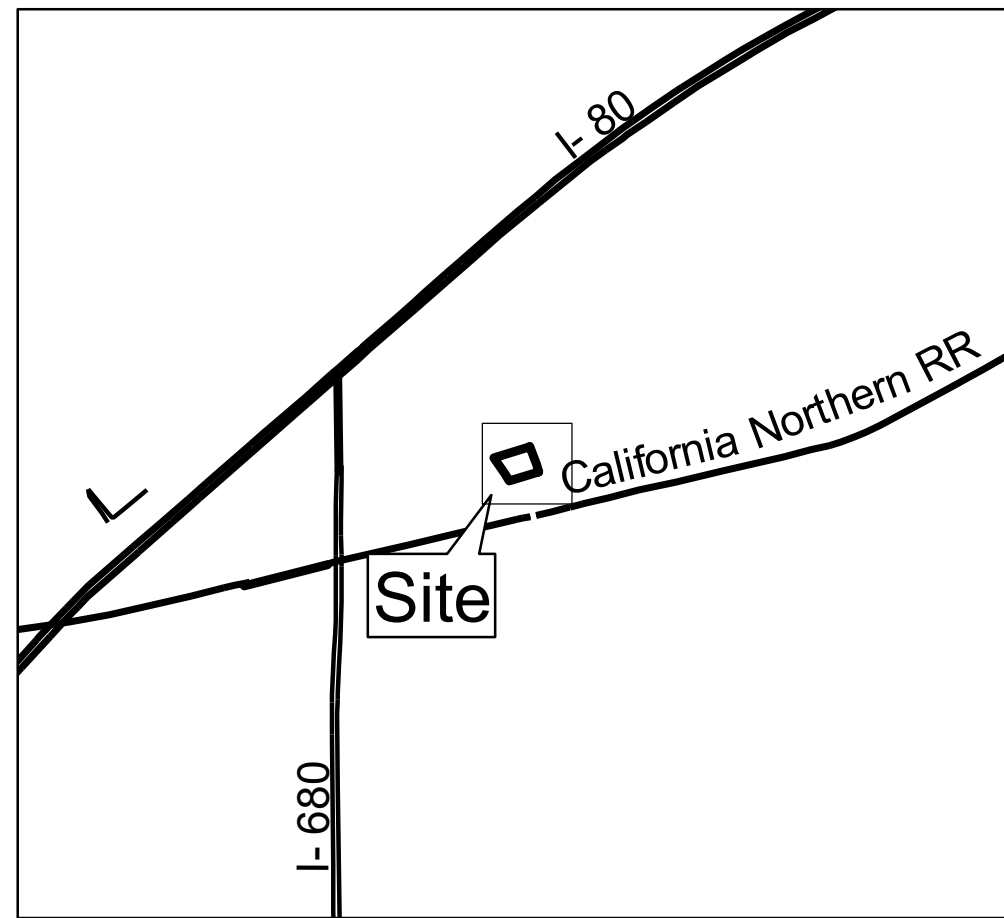


**ANNEXATION MAP NO. 48 (PITTMAN SELF-STORAGE)  
COMMUNITY FACILITIES DISTRICT NO. 2012-2  
(PUBLIC SAFETY SERVICES, OPEN SPACE OPERATION, AND PARK MAINTENANCE)**

CITY OF FAIRFIELD  
COUNTY OF SOLANO  
STATE OF CALIFORNIA

Vicinity Map



FILED IN THE OFFICE OF THE CITY CLERK THIS \_\_\_\_\_ DAY OF \_\_\_\_\_, 20\_\_\_\_.

I HEREBY CERTIFY THAT THE WITHIN MAP SHOWING PROPOSED BOUNDARIES OF ANNEXATION MAP NO. 48 (PITTMAN SELF-STORAGE) OF COMMUNITY FACILITIES DISTRICT NO. 2012-2 (PUBLIC SAFETY SERVICES, OPEN SPACE OPERATION, AND PARK MAINTENANCE), CITY OF FAIRFIELD, COUNTY OF SOLANO, STATE OF CALIFORNIA, WAS APPROVED BY THE CITY COUNCIL OF THE CITY OF FAIRFIELD AT A REGULAR MEETING, THEREOF, HELD ON THE \_\_\_\_\_ DAY OF \_\_\_\_\_, 20\_\_\_\_, BY ITS RESOLUTION NO. \_\_\_\_\_.

\_\_\_\_\_  
CITY CLERK  
CITY OF FAIRFIELD

FILED THIS \_\_\_\_\_ DAY OF \_\_\_\_\_, 20\_\_\_\_,  
AT THE HOUR OF \_\_\_\_\_ O'CLOCK \_\_\_\_\_ M. IN BOOK  
PAGE(S) \_\_\_\_\_ OF MAPS OF ASSESSMENT AND  
COMMUNITY FACILITIES DISTRICT AND INSTRUMENT NO.  
\_\_\_\_\_ IN THE OFFICE OF THE COUNTY RECORDER IN  
THE COUNTY OF SOLANO, STATE OF CALIFORNIA.

MARC C. TONNESEN, ASSESSOR/RECORDER


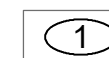
\_\_\_\_\_  
BY DEPUTY  
COUNTY RECORDER  
COUNTY OF SOLANO  
STATE OF CALIFORNIA

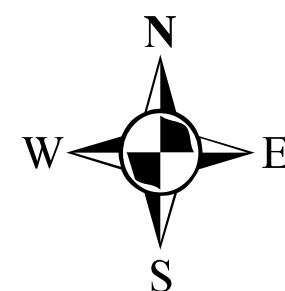
REFERENCE IS MADE TO THAT BOUNDARY OF COMMUNITY FACILITIES DISTRICT NO. 2012-2 (PUBLIC SAFETY SERVICES, OPEN SPACE OPERATION, AND PARK MAINTENANCE) OF THE CITY OF FAIRFIELD RECORDED WITH THE SOLANO COUNTY RECORDER'S OFFICE ON DECEMBER 28, 2012, IN BOOK 24 OF MAPS OF ASSESSMENT AND COMMUNITY FACILITIES DISTRICT ON PAGES 87-100.

THE LINES AND DIMENSIONS OF EACH LOT OR PARCEL SHOWN ON THIS DIAGRAM SHALL BE THOSE LINES AND DIMENSIONS AS SHOWN ON THE SOLANO COUNTY ASSESSOR'S MAPS FOR THOSE PARCELS LISTED.

THE SOLANO COUNTY ASSESSOR'S MAP SHALL GOVERN FOR ALL DETAIL CONCERNING THE LINES AND DIMENSIONS OF SUCH LOTS OR PARCELS.

**Legend**

-  Annexation No. 48
-  Map Reference Number



MAP REFERENCE NUMBER	ASSESSOR'S PARCEL NUMBER
1	0044-050-350
2	0044-050-360