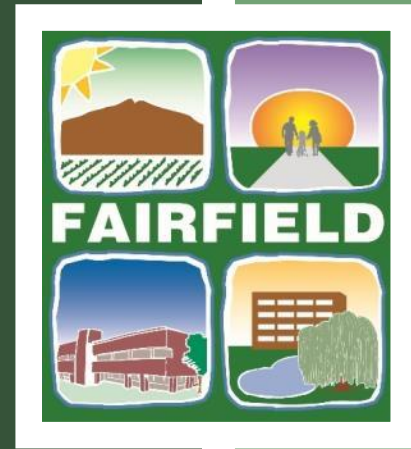
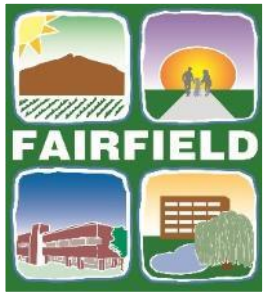


# LINEAR PARK TRAIL NODE 4A UPDATE





# PROJECT HISTORY

**January 2016** – Community Spaces Initiative in Council Work Plan

**JULY 2016** – Council Authorizes Acceleration of Project

**JANUARY 2017** – Design Consultants Begin Work

**MARCH 2018** – Design Plans & 5-Year Implementation Plans Approved

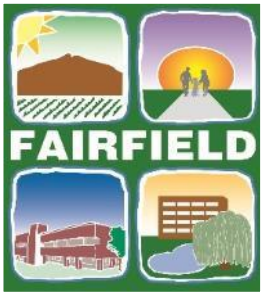
**JUNE 2018** – Funding Approved in 2018/19 Budget Cycle

**APRIL 2019** – Request to Accommodate PAL with Larger Facility

**AUGUST 2019** – Proposition 68 Grant Submitted

**FEBRUARY 2020** – Proposition 68 Grant Rejected





# NODE 4A | AS INITIALLY PROPOSED

PROMENADE CONNECTION  
TO NORTH TEXAS ST

PARKING

RECREATION  
FACILITY

(N) CMU WALL

WARM UP FIELD

FULL SIZED MULTI-PURPOSE FIELDS

FITNESS  
(PAR COURSE STATION)

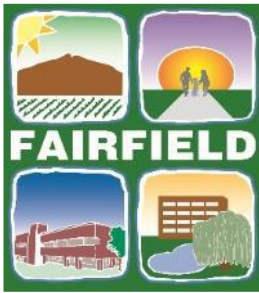
PICNIC AREA

NORTH TEXAS ST.

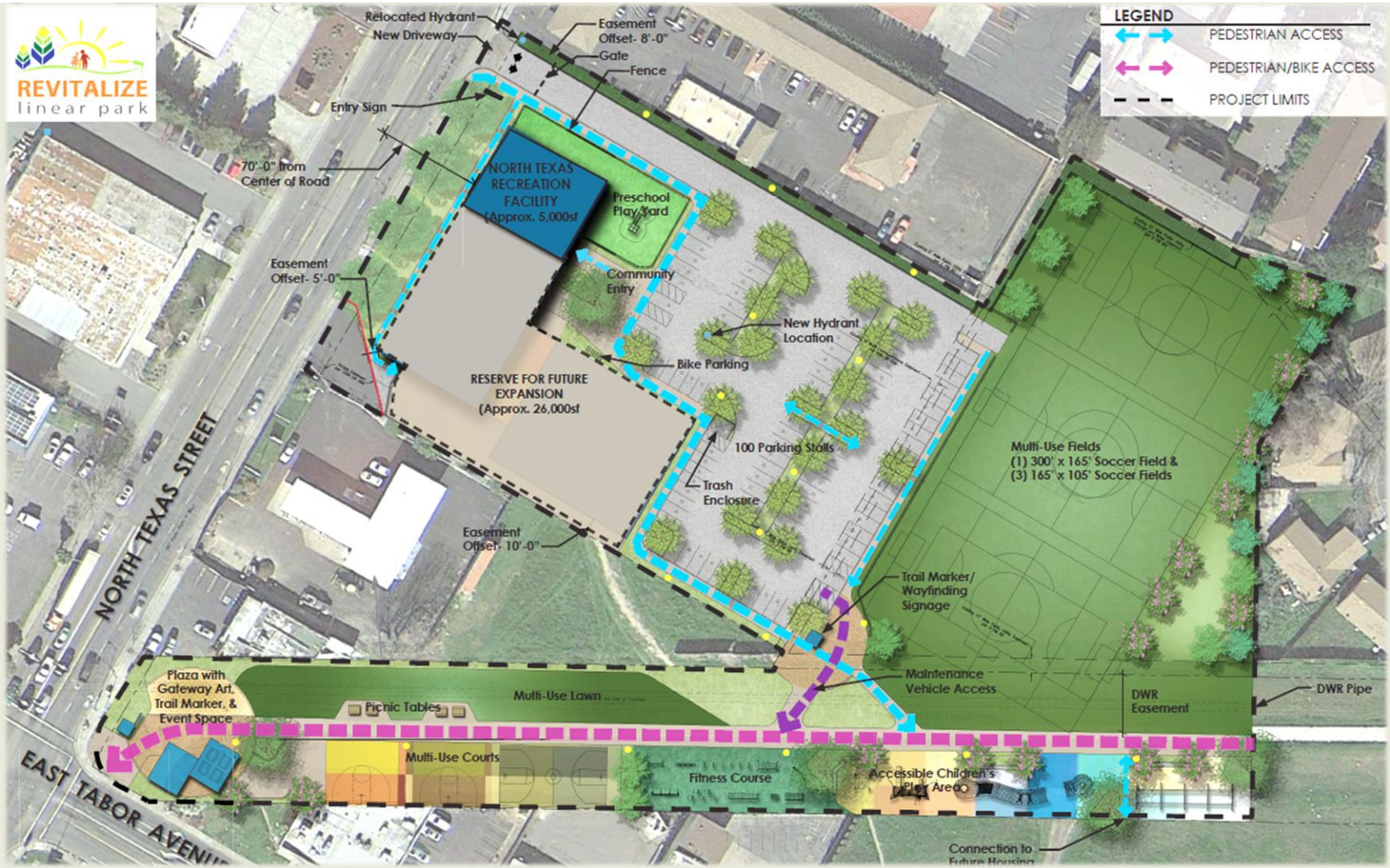
PLAY  
ART  
SEWER  
AGE

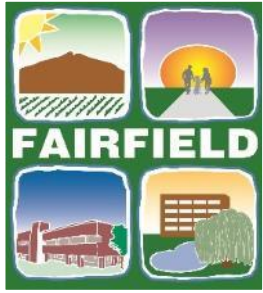






# NODE 4A | EXPANDED FACILITY





# COUNCIL ACTION

## Recommended Action

Proceed with design and construction of the original Node 4A active and passive elements as initially envisioned with a 5,000 SF recreation facility; and position the facility to accommodate future building expansions.

# LINEAR PARK TRAIL NODE 4A UPDATE

